



MOORING BUOY · ROTO-MOULDED HDPE

# Roto-moulded mooring buoys, *tarred-chain through-axis.*

Plastic body, polyurethane-foam-filled, hot-dip galvanized chain plate. Seven sizes from 300 to 2,500 litres displacement. A tarred chain passes through the buoy axis — the load runs through the body, not the surface fittings.

17

YEARS · SINCE 2009

39

EXPORT COUNTRIES

50+

TURNKEY PROJECTS

IALA

MEMBER · SINCE  
2015

Engineered. Manufactured. *Deployed.*

**ASAKUA.COM**

MOORING · ANCHOR LINES · AQUACULTURE

## Through-axis chain for true on-station load.

ASAKUA mooring buoys are produced by the rotational moulding process from **UV-stabilized virgin polyethylene**. The whole internal cavity is filled with closed-cell polyurethane foam or polystyrene; metal parts are **hot-dip galvanized**. The tarred chain passes through the central axis of the buoy body — load is carried in tension through the body, not by surface attachments. Day marks per IALA recommendations; solar LED beacons available.

MODEL	Ø (MM)	HEIGHT (MM)	VOLUME (L)	LOAD (KG)
MB300	900	900	300	150
MB600A	900	1,100	600	300
MB600B	1,200	850	600	300
MB900	1,200	1,150	900	450
MB1200	1,200	1,400	1,200	600
MB1600	1,200	1,700	1,600	800
MB2500	1,600	2,100	2,500	1,250

### THROUGH-AXIS LOADING – BY DESIGN

The tarred mooring chain runs through the central axis of the buoy body, transferring load through the polyethylene shell rather than through bolted-on hardware. The internal foam fill keeps the buoy positive even after surface impact damage.

ISO 9001 · CERTIFIED

ISO 14001 · CERTIFIED

EN 12201 · CERTIFIED

NS 9415 · COMPLIANT

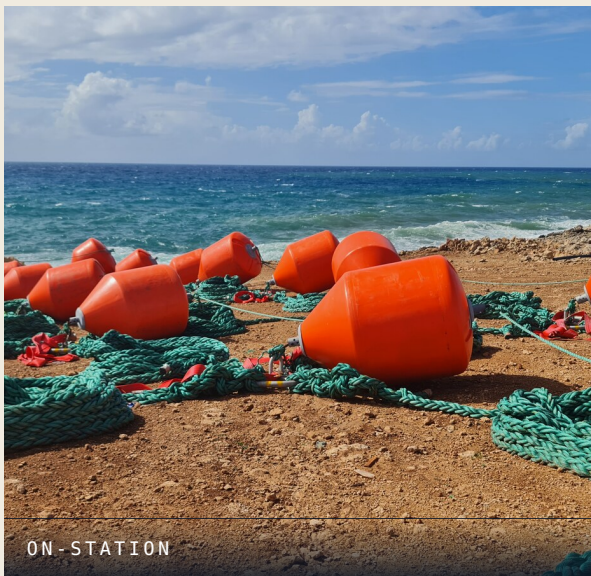
DNV-OS-E403 · COMPLIANT



TARRED CHAIN AXIS



GALVANIZED PLATE



ON-STATION



WEB  
asakua.com

EMAIL  
info@asakua.com

PHONE  
+90 532 685 22 46

ADDRESS  
Menemen, İzmir, Türkiye

REV 2026-05  
EN